



SIMPLY ZERO

ILFI'S ZERO ENERGY CERTIFICATION PROGRAM

AGENDA

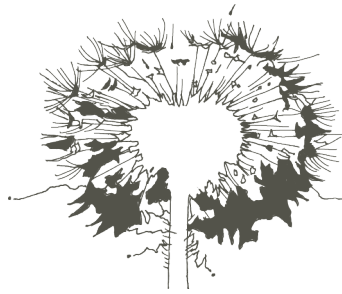
ZERO ENERGY CERTIFICATION OVERVIEW

FAQs

CASE STUDIES

OVERVIEW



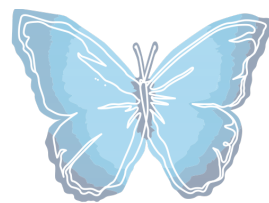


INTERNATIONAL
LIVING FUTURE
INSTITUTESM

A GLOBAL NETWORK
DEDICATED TO CREATING A
HEALTHY FUTURE FOR ALL



LIVING BUILDING CHALLENGESM



LIVING PRODUCT CHALLENGESM



CARBON CERTIFICATION



LIVING COMMUNITY CHALLENGE



Declare.SM

REVEAL.

Just.SM

ZERO CARBON
CERTIFICATION



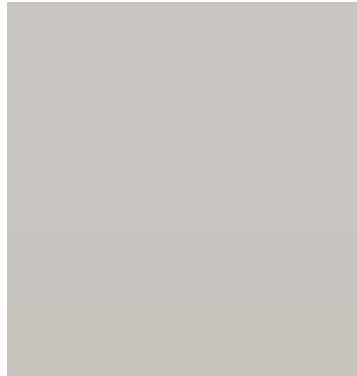
ZERO ENERGY
CERTIFICATION



CERTIFIED
PETAL
2016



LIVING
BUILDING
CHALLENGESM





ONE HUNDRED PERCENT **(100%)** OF
THE BUILDING'S ENERGY NEEDS, ON A
NET ANNUAL BASIS, MUST BE SUPPLIED
BY **ON-SITE RENEWABLE ENERGY.**

NO COMBUSTION IS ALLOWED.

PROCESS

1. REGISTRATION
2. DOCUMENTATION
3. AUDIT
4. CERTIFICATION

COSTS

RESIDENTIAL: \$1,250

COMMERCIAL: \$2,000

FAQs

RENEWABLE ENERGY?

solar/photovoltaics, wind turbines, water-powered microturbines and geothermal energy

FAQs

WHAT'S NOT ALLOWED?

fossil fuels, combustion, or nuclear power

FAQs

WHAT BUILDINGS QUALIFY?

*(nearly) any building, new or already operational,
anywhere in the world*

FAQs

SCALE JUMPING?

yes

CASE STUDIES

CORK HOUSE

INDIGO | HAMMOND + PLAYLE
ARCHITECTS STUDIO AND OFFICE

BURH BECC at BEACON SPRINGS



CORK HOUSE

STATS

RESIDENTIAL | 1174 SF | SEATTLE, WA

8.1 kW array | 6,632 kWh | 13 kBTU/sf/yr

Net Energy: -86 kWh/yr



CERTIFIED
NET ZERO

CORK HOUSE

STATS

RESIDENTIAL | 1174 SF | SEATTLE, WA

8.1 kW array | 6,632 kWh | 13 kBtu/sf/yr

Net Energy: -86 kWh/yr



CERTIFIED
NET ZERO

CORK HOUSE

STATS

RESIDENTIAL | 1174 SF | SEATTLE, WA

8.1 kW array | 6,632 kWh | 13 kBtu/sf/yr

Net Energy: -86 kWh/yr



INDIGO | HAMMOND + PLAYLE

STATS

COMMERCIAL | 4100 SF | DAVIS, CA

11.4 kW array | 20,200 kWh | 13.7 kBTU/sf/yr

Net Energy: -3,802 kWh/yr



INDIGO | HAMMOND + PLAYLE

STATS

COMMERCIAL | 4100 SF | DAVIS, CA

11.4 kW array | 20,200 kWh | 13.7 kBTU/sf/yr

Net Energy: -3,802 kWh/yr



INDIGO | HAMMOND + PLAYLE

STATS

COMMERCIAL | 4100 SF | DAVIS, CA

11.4 kW array | 20,200 kWh | 13.7 kBTU/sf/yr

Net Energy: -3,802 kWh/yr



CERTIFIED
LIVING

BURH BECC

STATS

RESIDENTIAL | 4,981 SF | ANN ARBOR, MI

16.8 kW array | 20,270 kWh | 7 kBtu/sf/yr

Net Energy: -4,283 kWh/yr

THANK YOU!

MATTHEW VANSWEDEN
INTEGRATIVE DESIGNER

MATT@CATALYST-PARTNERS.COM



catalystpartners