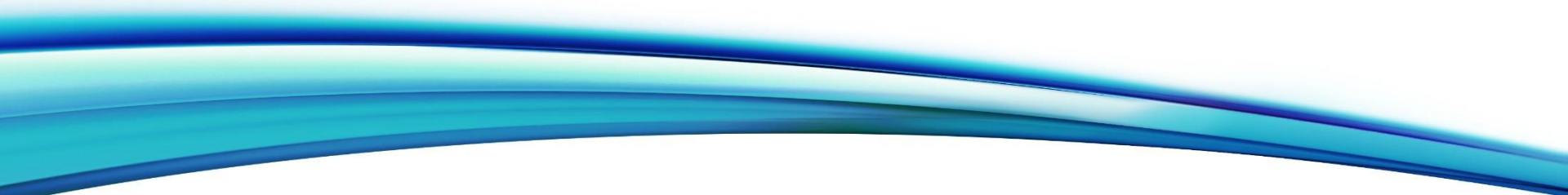




**Spectrum**  
Health



# Interconnection of Human and Environmental Health

West Michigan USGBC Annual Event

Kenneth Fawcett, M.D.

January 16<sup>th</sup>, 2019

# Agenda

- What is health
- Current *health* status of our community
- Social Determinants of Health
- Anchor Institution

# What is Health?

**THE DRIVERS OF HEALTH ARE COMPLEX AND INTERCONNECTED**



SycamoreInstituteTN.org

Image from: <https://www.sycamoreinstitutetn.org/drivers-of-health/>

# Factors that Impact your Health

Figure 1

## Social Determinants of Health

| Economic Stability   | Neighborhood and Physical Environment | Education                 | Food                      | Community and Social Context | Health Care System                          |
|--|---------------------------------------|---------------------------|---------------------------|------------------------------|---|
| Employment   | Housing                               | Literacy                  | Hunger                    | Social integration           | Health coverage                             |
| Income   | Transportation                        | Language                  | Access to healthy options | Support systems              | Provider availability                       |
| Expenses   | Safety                                | Early childhood education |                           | Community engagement         | Provider linguistic and cultural competency |
| Debt   | Parks                                 | Vocational training       |                           | Discrimination               | Quality of care                             |
| Medical bills  | Playgrounds                           | Higher education          |                           | Stress                       |   |
| Support  | Walkability                           |                           |                           |                              |   |
|  | Zip code / geography                  |                           |                           |                              |   |
| <b>Health Outcomes</b><br>Mortality, Morbidity, Life Expectancy, Health Care Expenditures, Health Status, Functional Limitations |                                       |                           |                           |                              |   |

Source: Heiman HJ, Artiga S, "Beyond Health Care: The Role of Social Determinants in Promoting Health and Health Equity," Kaiser Family Foundation, November 2015;

"Disparities in Health and Health Care: Five Key Questions and Answers," Kaiser Family Foundation, December 2012

<https://www.kff.org/disparities-policy/issue-brief/beyond-health-care-the-role-of-social-determinants-in-promoting-health-and-health-equity/>



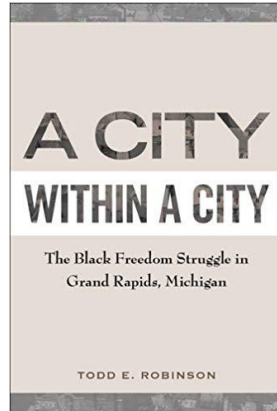
# Changing Times

- Host of Drivers
  - Moral, Ethical and Principle
  - “Of all the forums of inequality, injustice in healthcare is the most shocking and inhumane”. Dr. Martin Luther King
- Changes in Payment
  - Funds historically limited for provision of care
  - Healthy Homes Coalition and Priority Health Collaboration focused on home remediation and asthma reduction

# Disparity in Prosperity of Community

- Forbes in 2016
  - Best place for raising a family
  - Second worst city for African American economic advancement
- In our backyard
  - Quantitative: 18 year life expectancy within Grand Rapids
  - Zip Code > Genetic Code
- Qualitative
  - Connection between wealth and health

# Grand Rapids Disparities



[home](#) [news](#) [print](#) [blogs](#) [calendar](#) [enewsletters](#)

[Home](#) » [Grand Rapids Ranks Among Worst Economically For African-Americans](#)

[Economic Development and Human Resources](#)

## Grand Rapids ranks among worst economically for African-Americans

January 22, 2015 | By Mike Nichols |

Forbes

[Billionaires](#) [Innovation](#) [Leadership](#) [Money](#) [Business](#) [Small Business](#) [Lifestyle](#) [Lists](#) [Advisor](#) [Featured](#)



### No. 1 Grand Rapids, Michigan

Rankings (of 100 largest metros):

Median Income: 65 Cost of Living Index: 6 Housing Affordability: 7 Commuting: 22 Pct. Owning Homes: 5 (75%) Crime: 27 Education: 35

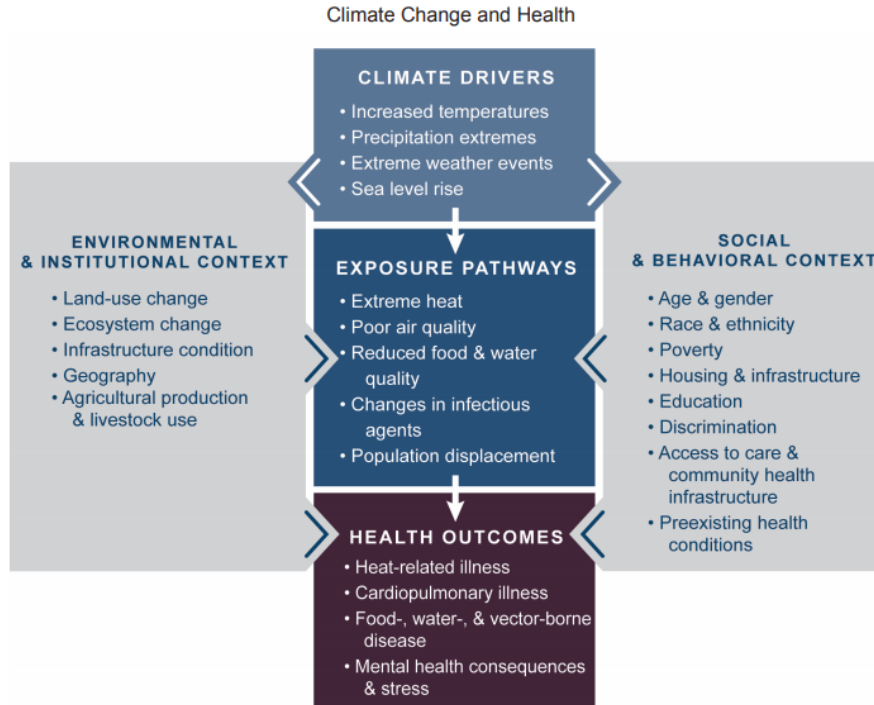
President Gerald Ford's hometown is home to several furniture makers. The public school system is supplemented by several charter schools.

istock

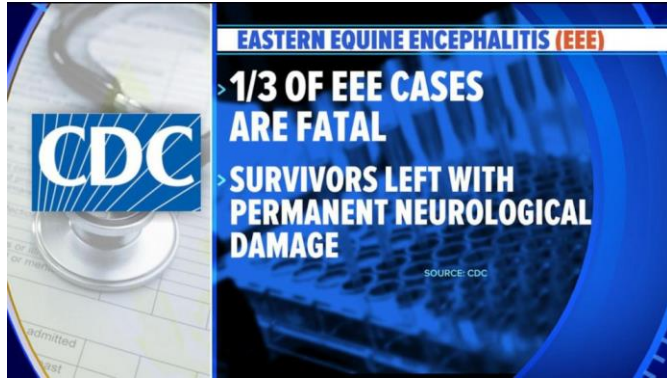




# Climate Change Impact on Health



# Environment and Health: Vector-Borne Disease



<https://abcnews.go.com/Health/mosquito-borne-virus-threat-grows-michigan-cases/story?id=65690261>

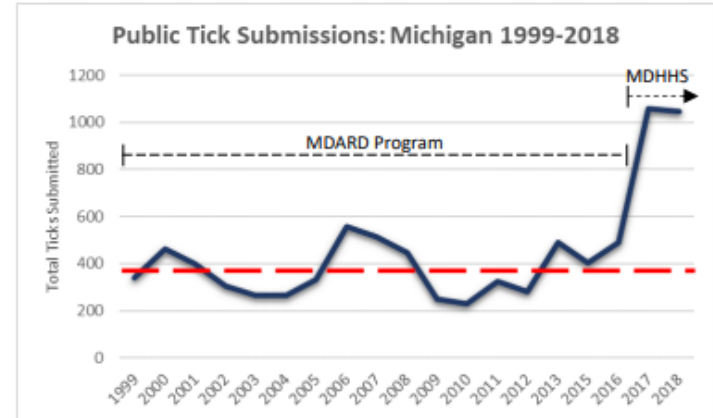
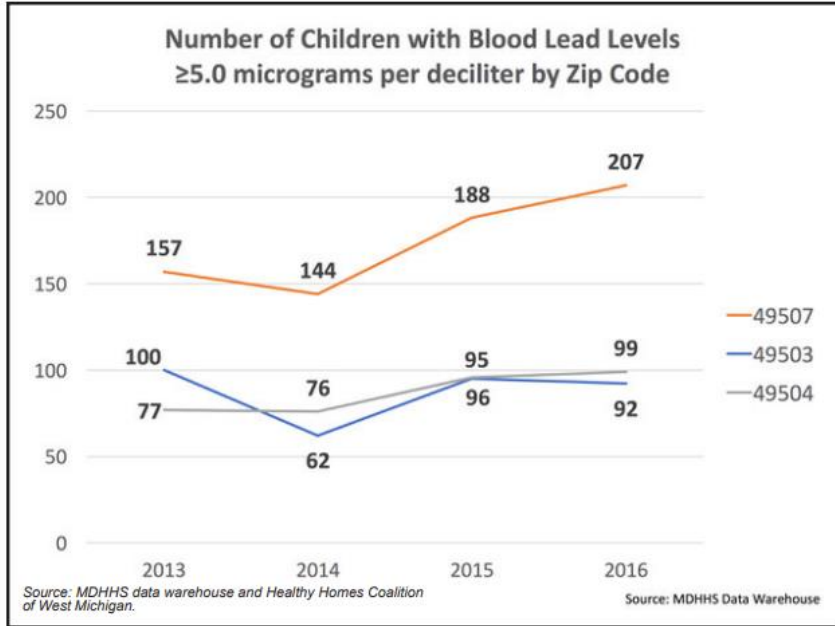


Figure 1. Number of ticks submitted to the Michigan Tick Identification and Testing Program from 1999-2018. From 1999-2016 the program was administered by the Michigan Department of Agriculture and Rural Development, MDHHS assumed responsibility for the program beginning in 2017.

Michigan Tick Identification and Testing Program: 2018 Summary Michigan Department of Health & Human Services (MDHHS) Emerging & Zoonotic Infectious Disease Section (EZID)

[https://www.michigan.gov/documents/emergingdiseases/Michigan\\_Tick\\_ID\\_2018\\_Summary\\_Web\\_641032\\_7.pdf](https://www.michigan.gov/documents/emergingdiseases/Michigan_Tick_ID_2018_Summary_Web_641032_7.pdf)

# Environment and Health: Lead Poisoning



There were more children lead poisoned in one zip code in Grand Rapids than in all of Flint.

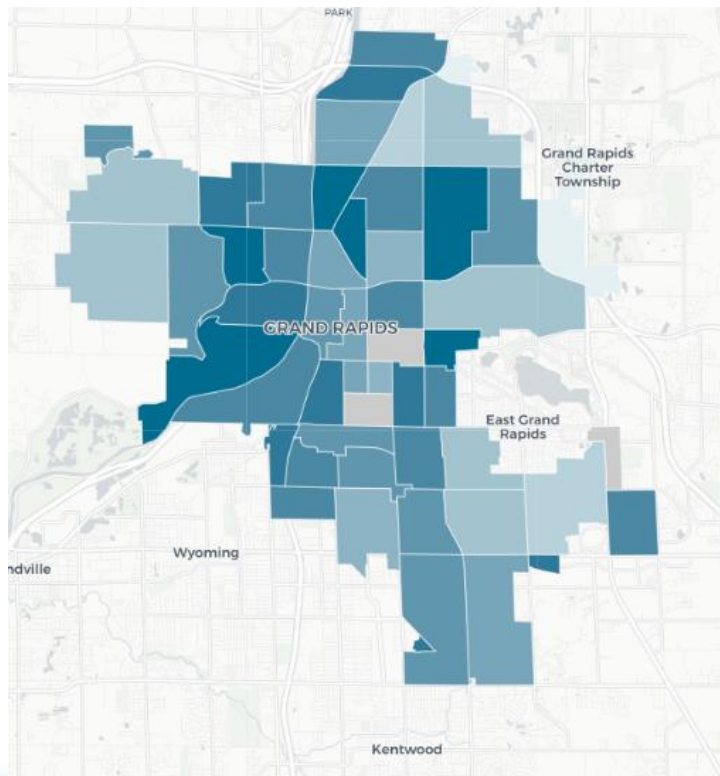
|  | Flint *                                | 49507                                   |
|--|--|---|
| <b>2014</b><br>(Flint Water Crisis begins April 2014)            | 122 children<br>3.9% of those tested   | 145 children<br>11.1% of those tested   |
| <b>2015</b><br>(Flint Reconnects to Detroit water November 2015) | ↓ 111 children<br>3.3% of those tested | ↑ 186 children<br>14.0% of those tested |

\* 48501 - 48507 zip codes

"Ending Child lead exposure in Kent County" Kent County Lead Task Force, January 2019

[https://www.accesskent.com/Health/Lead/pdf/2018\\_Report.pdf](https://www.accesskent.com/Health/Lead/pdf/2018_Report.pdf)

# Environment and Health: Life Expectancy by Zip Code



- Average life expectancy at birth of 78.7
- Zip code-Census Tract Life Expectancy
  - 49506-24 73.2
  - 49525-118.01 87.4
- 14 year difference within the same city

City Value for Life Expectancy in Grand Rapids, MI



Grand Rapids had an average life expectancy at birth of 78.7, compared to an average of 78.8 across the Dashboard cities.

## What drives health outcomes?

# The Social Determinants of Health

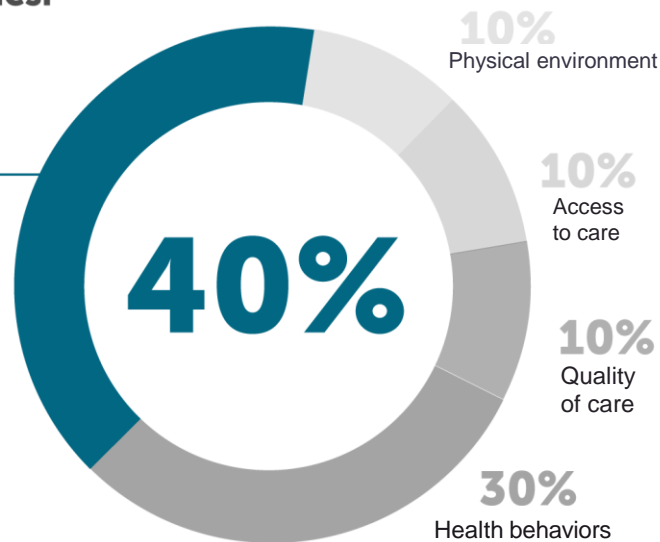
To address health inequalities, **you must address social and economic inequalities.**

## Social & Economic Factors

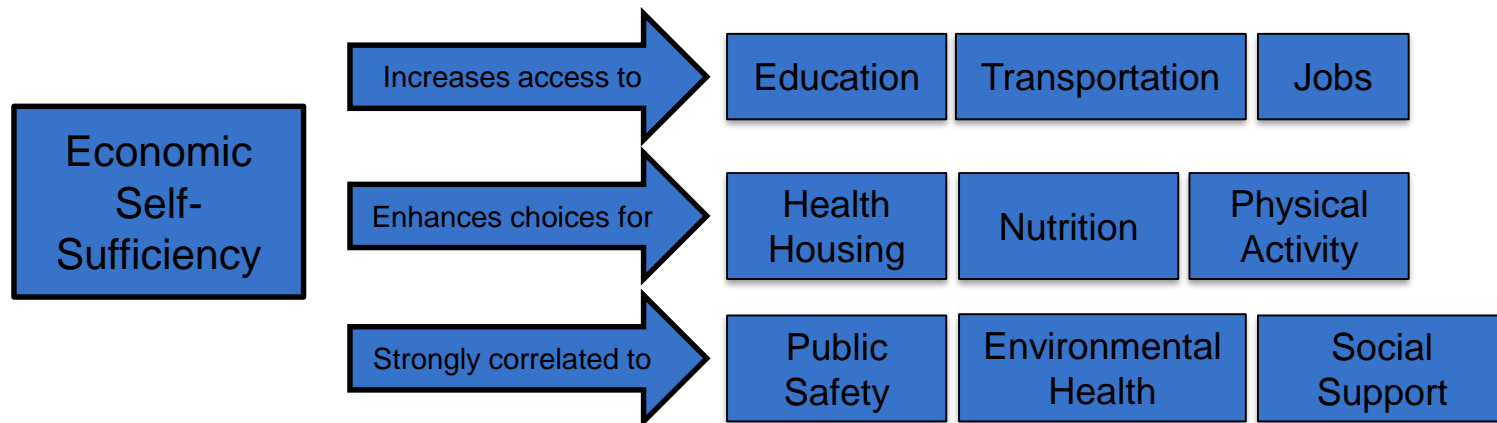
- Education
- Employment
- Income
- Family & Social Support
- Community Safety

Data from "County Health Ranking & Roadmaps,"  
University of Wisconsin Population Health Institute

HealthcareAnchor.Network



# Theory of Change: wealth as Foundation



*Developed by Dave Fife, 2019 Fellow at Spectrum Health*

# What are Anchor Institutions?

- Nonprofit or public institutions
- Rooted in place- “sticky capital”
- Economic engines- large purchasers, employers & investors



LOCAL  
GOVERNMENT



UNIVERSITIES



HOSPITALS &  
HEALTH SYSTEMS



COMMUNITY & PLACE-  
BASED FOUNDATIONS

# The Anchor Mission

---

A commitment to intentionally apply an institution's long-term, place-based economic power and human capital in partnership with community to mutually benefit the long-term well-being of both.



## Drivers of Community Wealth Building



### PLACE

Develops under-utilized local assets of many kinds for benefit of local residents



### OWNERSHIP

Promotes local, broad-based ownership as the foundation of a thriving economy



### MULTIPLIERS

Encourages institutional buy-local strategies to keep money circulating locally



### COLLABORATION

Brings many players to the table: nonprofits, anchors, philanthropy, and cities



### INCLUSION

Aims to create inclusive, living wage jobs that help all families enjoy economic security



### WORKFORCE

Links training to employment and focuses on jobs for those with barriers to employment



### SYSTEM

Develops institutions and supportive ecosystems to create a new normal of economic activity

# Anchor Assets

---

## Functional assets

- Community planning & leadership
- Business & financing
- Partnering capacity
- Communications
- Government relations
- Public policy
- Healthcare services
- Research, Data, and Technology
- Diversity & Inclusion
- Labor-Management Relations
- Reputation

## Discretionary assets

- Community Benefit Grants
- Community Health Initiatives
- Social & Economic Support Services
- Foundation & Philanthropic initiatives

## Economic assets

- Hiring and Workforce
- Procurement/Purchasing
- Treasury/Investment
- Construction
- Real Estate/Facilities

# Collective Community Action





**Spectrum**  
Health

